

- ★ Progressive and Modern School System
- ★ Outstanding Industrial Center
- ★ Improved Street System

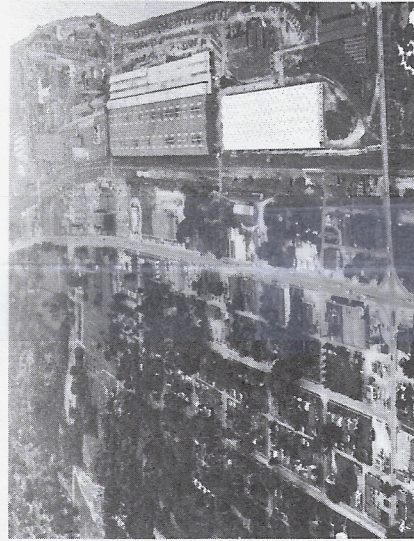


Photo courtesy A. Don Turner.

★ Growing Commercial Area

The first name which the present town of Bettendorf ever had was simply that it was a part of the original Wisconsin Territory. For many decades it was the undisturbed home of the Indian. Its surrounding hills are rich with Indian lore and in all the lands nearby are grown the foods which feed the world. For this is Iowa; the heart of America.

When Dred Scott, the famous slave, was placed here by his owner, John Emerson, to fulfill residence requirements, Bettendorf was even then playing her role in American history. Later a handful of settlers started a community known as Lillienthal which; a few years later became Gilberttown. This was a cozy, friendly place; rich in cattle and rich in grain and all the villagers worked as one to build them a village of which they would be proud; safe and sure here on the banks of the mighty Mississippi.

Early in 1900 W. J. Bettendorf purchased 70 acres in Gilberttown, moved his axle business from Davenport and there in Gilberttown great factories commenced to take shape. The people of Gilberttown were quite willing to change the name of their town to Bettendorf in honor of the man who was doing so many things toward the progress of their community. In 1902 the plat for the new town of Bettendorf was recorded and in 1908 the big new machine shops of the Bettendorf Company were formally opened and work was begun with a luncheon at-

tended by 1200 of their well-wishers. Prosperity smiled on the town of Bettendorf and it grew and developed.

In 1929 when the market crash came, it left its mark on Bettendorf as in many other similar communities and it was not until 1937 that the town's financial situation was brought out of the red and the city again started its move forward. Street systems were improved, municipal equipment was purchased, new homes were erected, and new industries were brought into the locality. Steady and sure growth has been the pattern for Bettendorf since then and now the expansion of its residential and industrial areas has become almost phenomenal.

Two hundred fifty new homes have been completed in the past year with twice as many planned for the coming year. Park McManus is being developed and enlarged; schools are being enlarged; erection of new school buildings is underway and the building of a public hospital is not far distant.

Riding along patiently with the rising tide of excitement is a quieter side of Bettendorf. Notable for their serenity in the midst of Bettendorf's bustle are the staid Masonic Sanitarium with its sweeping hillside lawns, the Carmelite Monastery, overlooking one of the Mississippi's mightiest bridges; and a richly wooded area of beautiful suburban homes. Bettendorf is a "boom" town with dignity.

- ★ Low Property Taxation Rate
- ★ Efficient City Administration
- ★ Beautiful Residential Area

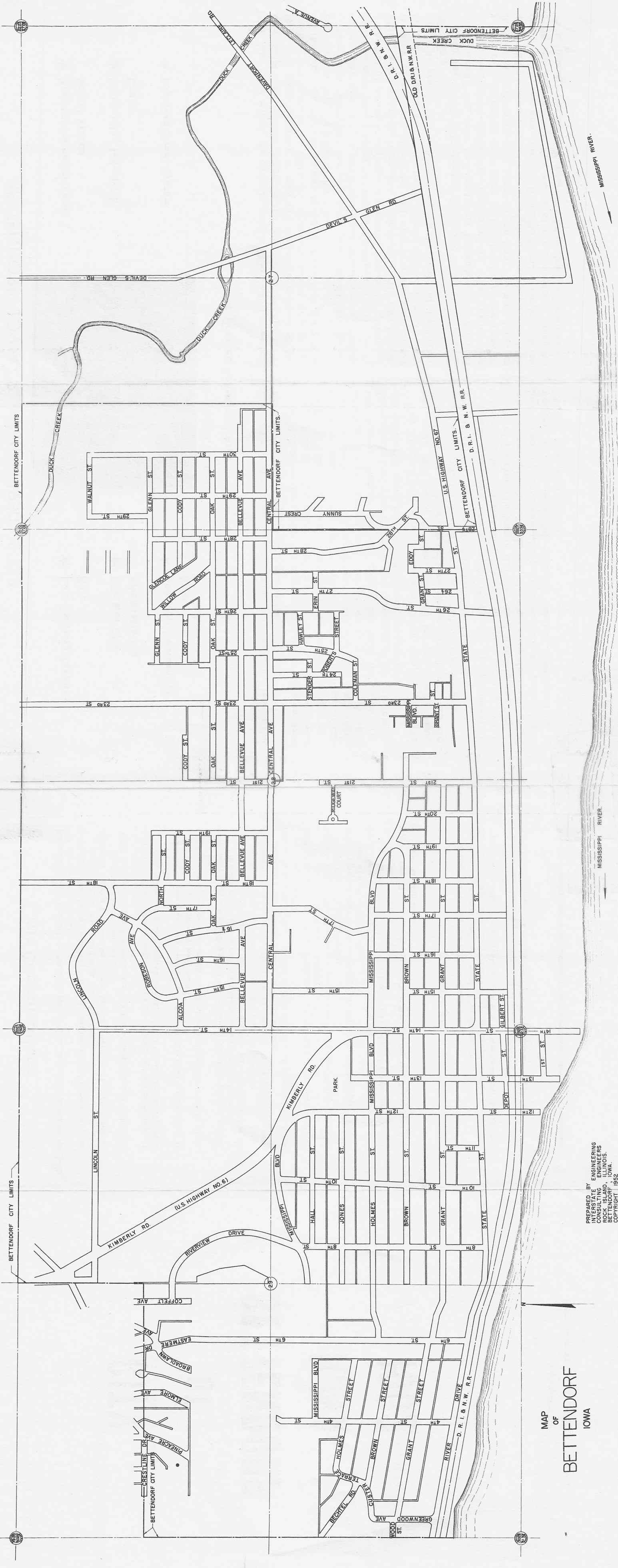
Civic Organizations

- Bettendorf City Council* — Meets regularly first and third Tuesdays at Bettendorf City Hall.
- Bettendorf Chamber of Commerce*—Dinner meeting on third Tuesday of each month, 6:45 at Bettendorf High School Cafeteria.
- American Legion Post* — Meets the second Thursday of each month at American Legion Hall at 8:00.
- V.F.W. Canfield-Hughes Post*—Meets at V.F.W. Clubroom on fourth Wednesday of each month.
- Bettendorf Lions Club*—Meets regularly on second and fourth Fridays of each month for dinner at 6:45 in basement of Community Presbyterian Church.
- American Legion Auxiliary* — Meetings held at American Legion Hall at 8:00 on third Thursday each month.
- V.F.W. Auxiliary*—Meets on fourth Thursday of each month at V.F.W. Clubroom.
- Bettendorf Lady Lions*—Regularly on the fourth Thursday of each month. Time and place determined by membership at preceding meeting.
- Bettendorf Civic League* — Recreational activity for children and teenagers. Times and places announced through news media.
- Bettendorf Boosters* — Meetings called periodically by president, with meeting place in Recreation room of Plaza Bowl.
- Hilltop Club*—Meets the first and third Friday of each month at the home of Homer Dillon.
- Bettendorf B.P.W.*—Holds meeting on second Wednesday of each month at Bettendorf High School, time 6:15 P.M.
- Lincoln P.T.A.*—Meets regularly the second Wednesday of each month at 7:30 P.M. in Lincoln School.
- Washington-Jefferson P.T.A.*—Meetings at Washington School third Thursday of each month, 7:30.
- Our Lady of Lourdes P.T.A.*—Meets regularly the second Thursday of each month at church hall of Our Lady of Lourdes alternate meetings in afternoon, 1:30 and 7:30.
- High School P.T.A.* — Meetings at 7:30 P.M. on the first Tuesday of five months each year.

CHURCHES

- Bettendorf Gospel Tabernacle*, 1504 Grant Street
- Our Lady of Lourdes Catholic Church*, 1444 Brown Street
- Our Saviour Lutheran Church*, Twenty-third and Central Avenue
- Asbury Methodist Church*, Washington School at Sixteenth and Mississippi Boulevard
- Church of the Nazarene*, 2412 Central Avenue
- Bettendorf Community Presbyterian Church*, 431 Seventeenth Street

CITY of BETTENDORF IOWA 1952



MAP
OF
BETTENDORF
IOWA

PREPARED BY ENGINEERING
INTERSTATE ENGINEERS
CONSULTING ENGINEERS
ROCK ISLAND, ILLINOIS.
BETTENDORF, IOWA.
COPYRIGHT 1952